

## Merit LILIN Application Note

Record DoorBird video via LILIN NVR

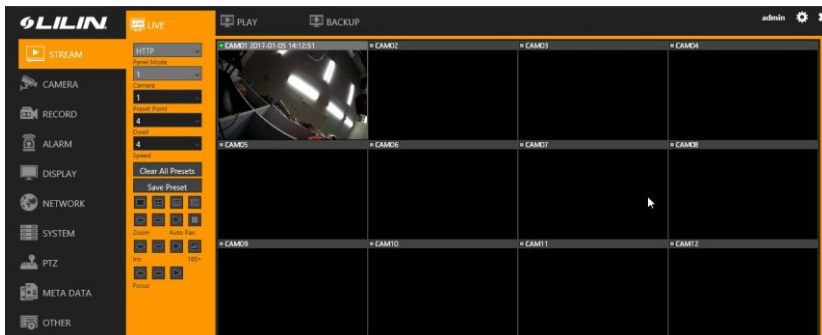
Document Number : A00125

Date : 12/05/2016

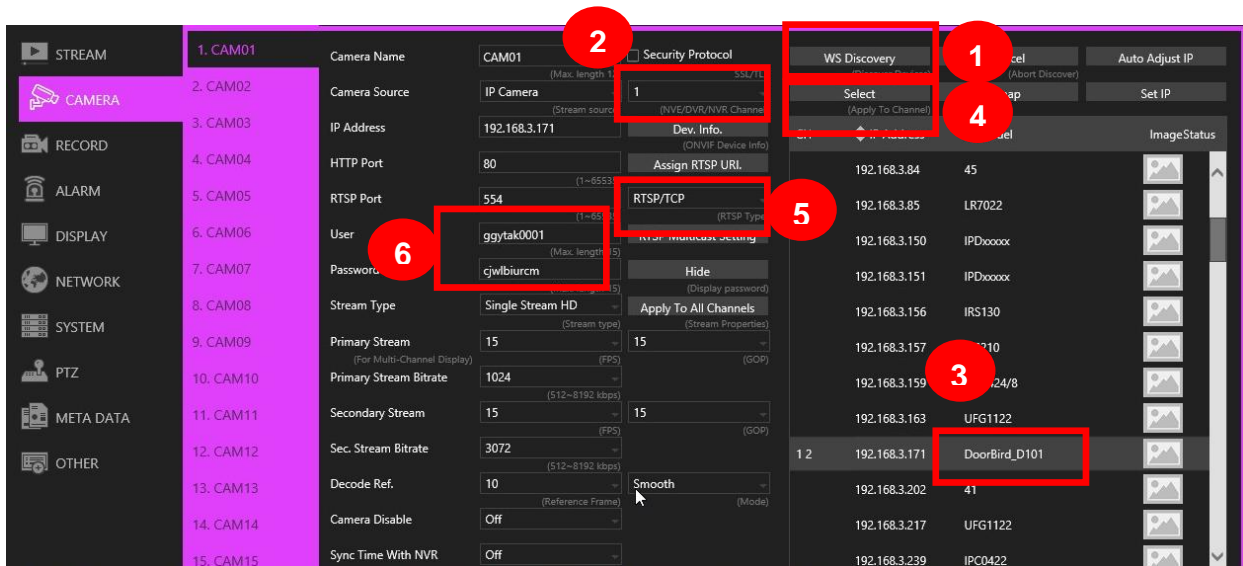
Dept : Technical Support, Taipei

**Subject:** This document describes how to use DoorBird with a LILIN NVR.  
Supported NVR: NVR1400, NVR2400, NVR400L, NVR200L, NVR100L

Step #1: Connect both the DoorBird and LILIN NVR to the network.



Step #2: Type 192.168.0.111 with “admin” and “pass” to logon LILIN NVR via Internet Explorer or other browser.



Step #3: Make sure that DoorBird is in the 192.168.0 subnet.

Step #4: Click on WS Discovery button for scanning the DoorBird on the network and follow the steps below:



- (1) Click on WS Discovery button.
- (2) Select which NVR channel to assign the DoorBird camera.
- (3) Select the scanned DoorBird camera.
- (4) Click on Select button to assign the DoorBird to the channel.
- (5) Make sure that the connection is RTSP/TCP.
- (6) Enter username and password for connecting DoorBird.
- (7) Click on Apply button to finish the setting.

**Note:** DoorBird provides only one H.264 HD stream. LILIN NVR needs dual streams, HD and SD, for 16-channel connection. Thus, LILIN NVR can only support up to 4 channels DoorBirds. If the NVR connects to only one channel DoorBird, you are still able to utilize the rest of 15 channels for LILIN IP cameras.

Motion detection and relay input & output are not supported. LILIN NVR can only provide recording for DoorBird.

**Contact**

Contact [lilin.zendesk.com](https://lilin.zendesk.com) for technical support.