

## Merit LILIN Application Note

How to add a DoorBird door station into LILIN NVR

Document Number : A00125

Date : 2018/04/20

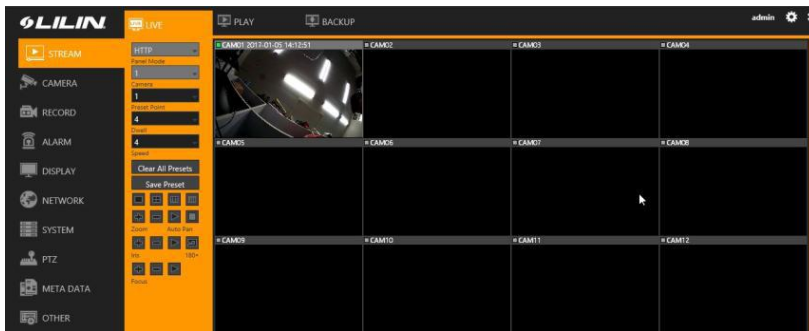
Dept: Technical Support, Taipei

**Subject:** This document describes how to add DoorBird IPCAM into LILIN NVR.

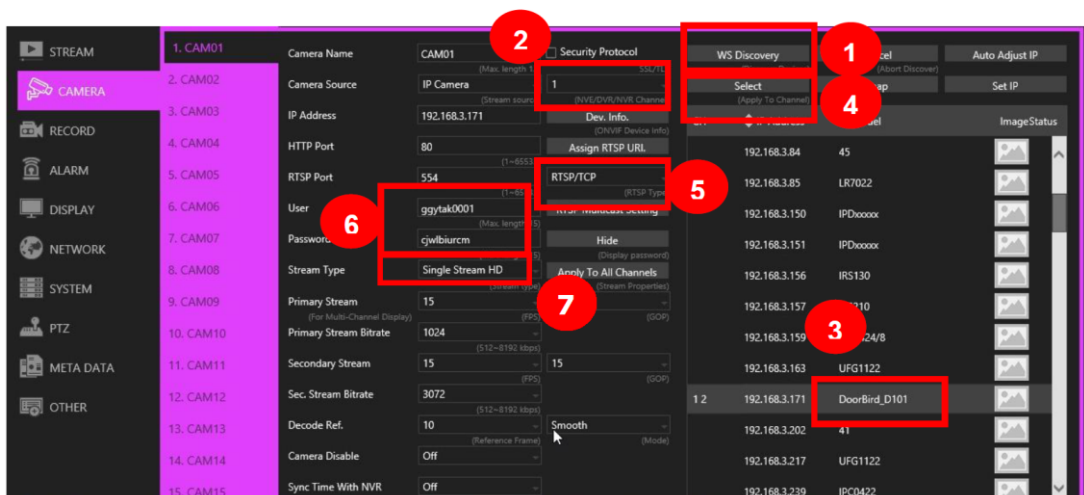
**Device Supported:** LILIN NVR1400, NVR2400, NVR400L, NVR200L, NVR100L (Only supported by NVR's that support an option of single stream HD).

### How to add the DoorBird door station into LILIN NVR

Step #1: Connect both the DoorBird and LILIN NVR to the network.



Step #2: Type 192.168.0.111 with "admin" and "1111" as **username and password** to logon LILIN NVR via Internet Explorer or other browser.





Step #3: Make sure that the DoorBird is in the 192.168.0 subnet.

**Note:** The IP address of DoorBird needs to be set by DHCP.

Step #4: Click on the WS Discovery button to scan for the DoorBird on the network and follow the steps below:

- (1) Click on WS Discovery button.
- (2) Select which NVR channel to assign the DoorBird camera.
- (3) Select the scanned DoorBird camera.
- (4) Click on Select button to assign the DoorBird to the channel.
- (5) Make sure that the connection is RTSP/TCP.
- (6) Enter username and password for the DoorBird.
- (7) Select Single Stream HD for Stream Type.
- (8) Click the Apply button to finish the setup.

**Note:** DoorBird cameras only provide one H.264 HD stream. LILIN NVR needs dual streams, HD and SD, for 16-channel connection. This means the LILIN NVR can only support up to 4 DoorBirds. If the NVR connects to only one DoorBird, you are still able to utilize the additional 15 channels for LILIN IP cameras.

Motion detection and relay input & output are not supported. LILIN NVR's can only provide recording for DoorBird.

Contact

Contact [lilin.zendesk.com](https://lilin.zendesk.com) for technical support.