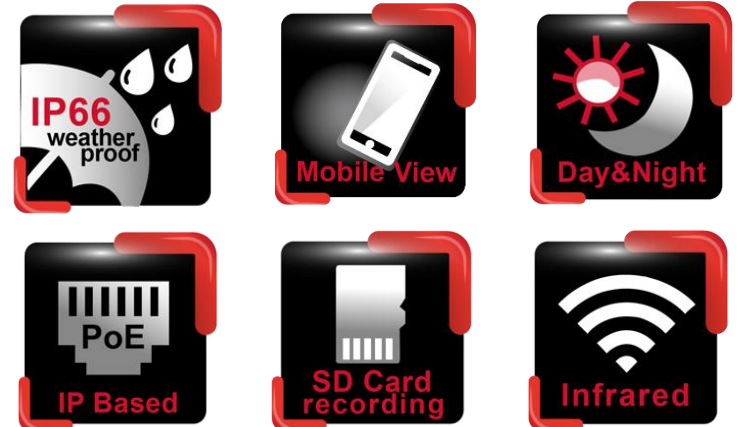


S series | IP Bullet

SR7424X/SR7428X

Day & Night 60fps HD Varifocal IR IP Camera

www.meritlilin.com



- ▶ Outdoor IP bullet camera
- ▶ 60 frames per second – ultra fast frame rate
- ▶ IP66 rain and dust resistant
- ▶ Intelligent Video Surveillance analytics built-in
- ▶ 45-metre infrared night vision
- ▶ 1080p resolution

Dimensions:

121.5(W) x 109(H)x 231(D) mm; Bracket: 160(L) mm

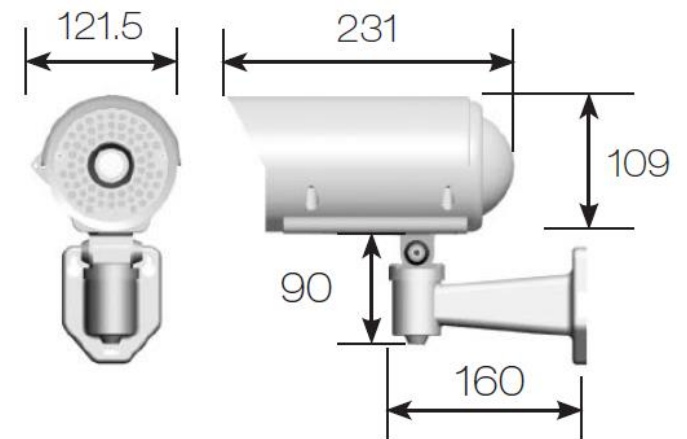
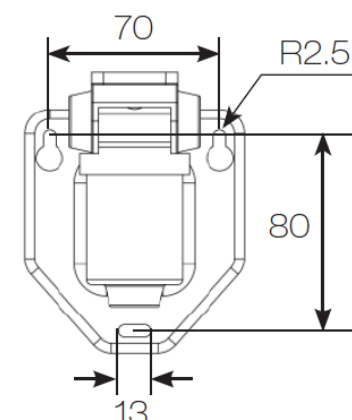


Diagram of mounting holes:



Viewing Objects to Ensure Pictures are Kept Sharp

LILIN S series camera – SR7424X/SR7428X is best-in-class IP camera has an ultra fast frame rate of 60 frames per second at 1080P Full HD resolution, this results in crystal clear images. Its IP66 rated housing protects the camera body against dust and rain, designed for a variety of outdoor applications. IP66 rating ensures operation under harsh weather conditions. SR7424X/SR7428X camera with 60 frame rate and 45-metre IR infrared LED illuminator is able to capture fast moving objects during both daytime and nighttime.

ONVIF-conformant

Open Network Video Interface Forum (ONVIF) is a standard for physical IP based security products. SR7424/8 camera is ONVIF Profile S conformant



SD Cards in Sync with NAV Software

SR7424/8 camera with built-in Micro SD/SDHC/SDXC card slots can provide redundant video viewing and recording. You can synchronize an SD card with LILIN VMS (Video Management Software) – Navigator (NAV)



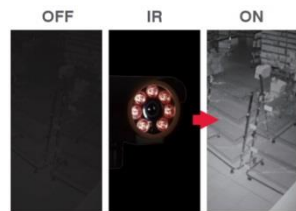
3D Noise Reduction

Remove noise from a signal. Suppressing noise in an image in low light conditions and able to retain quality videos at the same time



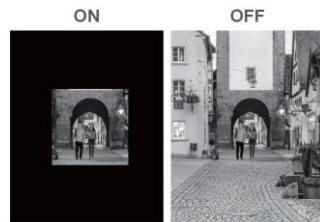
Built-in IR Illumination

SR7424/8 IP camera with infrared (IR) illumination where IR LEDs are built-in. Built-in with IR LED, the camera provides night vision up to 45 metres



Region of Interest (ROI)

A Region of Interest (ROI) is a specified part of an image that is highlighted from a camera. This feature is great for highlighting areas such as doors or areas of access where an overall scene is still required



Face Detection

Automatically detects a human face



Advanced Motion Detection

Detect motion and capture the events. Motion in the selected area will provoke an alert. Time of motion in given direction can be detected by simply drawing an arrow on the video



Audio Detection

With Audio Detection technology, an alarm is triggered based on ambient sound conditions as the threshold



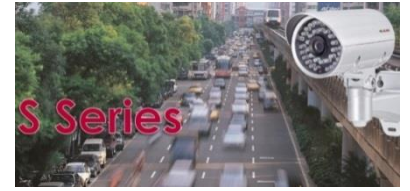
Motion Detection

Detect motion and capture the event. Motion in the selected area will provoke an alert.



60 frames per second

60fps high frame rate ensure quick movements can be captured in more details, which is great for the most demanding surveillance requirements; i.e. railway system, freeway traffic, casino applications, and banking industry



Sense Up+

Deliver outstanding video outputs in poor light conditions without experiencing motion blur. You can see video clearly even during nighttime without sufficient lighting support



Video Security App

Available on Android and iOS – LILINViewer app provides security alarm push notification, real-time live viewing, and remote video playback



Wind and Rain Standards

Meet international IP66 standards for dust and moisture resistant allowing you to install cameras in environments subject to wind and rain



High Dynamic Range

An High Dynamic Range (HDR) image is made by taking 3 frames of the same scene and each at different shutter speeds to display details of both the darkest and brightest areas. HDR can extend image visibility under high contrast lighting scenes and improve image quality



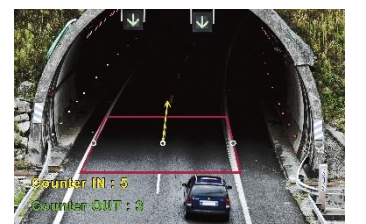
Tripwire Detection

Tripwire Detection can be used where physical security is impractical or even impossible; i.e. railway tracks. An alarm can be enabled in either directions across the tripwire. Line Crossing that an object crossing a line drawn anywhere in the scene can be detected, and also Zone Intrusion that any arbitrary shape zone can be set to monitor intrusion



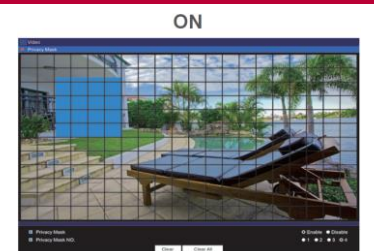
Object Counting

Object Counting is able to accurately to input images containing similar objects. Intelligent Object Counting technology includes People Counting feature – people enter or exit an area over time can be counted, as well as Vehicle Counting feature – to detect and track vehicle in real-time



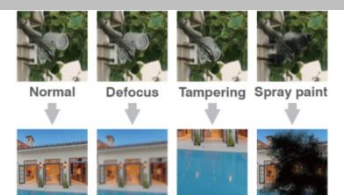
Privacy Masking

Privacy Masking is a feature used to protect personal privacy by concealing private areas in the camera's field of view. Doorways and house windows for example are not subject to surveillance



Tamper Detection

Automatically detects camera sabotage or failure. Detects any attempts to tamper with the camera – partially or completely blocking its lens or field of view



Day & Night 60fps HD Varifocal IR IP Camera

Video performance

Model#	SR7424EX3.6	SR7428EX3.6
Low Light Mode	0.06 Lux at F1.4 (Color);0.02 Lux at F1.4 (B/W)	
With Infrared	0.0 lux	
2D WDR	Off / Auto / x2 / x3/ x4 (by normal mode)	
High Dynamic Range	Up to 120 dB by HDR mode, 2 shutter line interleave	

Power

Model#	SR7424EX3.6	SR7428EX3.6
Power consumption	15W (PoE+, 16.5W)	
PoE+	IEEE802.3at	
Power supply	AC24V (±10%)	AC100~240V (±10%)
	Power over Ethernet+ (IEEE 802.3at compliant)	

Sensor

Sensor type	1/2.86-inch MOS	
Total sensor pixels	1952 x 1266	

Certifications

Model#	SR7424EX3.6	SR7428EX3.6
CE	Yes, EMI CLASS A	Yes, EMI CLASS A
FCC	Yes, EMI CLASS A	Yes, EMI CLASS A
IP Rating	IP66	

Lens

Model#	SR7424EX3.6	SR7428EX3.6
Focal length	2.8mm~12mm	
Iris	F1.4	
Angle of View	H	91.2° ~ 25.5°
	V	59.4° ~ 22.4°
	D	99° ~ 37.3°

Night vision (infrared LED)

Distance	45m
Peak wavelength	850nm, high efficiency array
Beam spread	30°

Environmental

Operating temperature	-40°C to 50°C (-40°F to 122°F)
-----------------------	--------------------------------

PC requirement

OS	Windows 2000, Windows XP, Windows Vista, Windows 7, Windows 8
CPU	Intel Core 2 Duo E6400 2.13GHz or above
RAM	2GB or above, Independent Display Card

Mechanical

Dimensions (W x H x D)	121.5 x 109 x 231mm
Bracket (L)	160mm
Weight	1700g approx.
Window	Ø92 Heat Resistant Glass, Rain repellent glass

Input / output

Audio input / output	Mono, 1.4 Vp-p, 50 KΩ, terminal connector
Alarm input / output	Digital 1 input (TTL, +3 to 5VDC) / 1 Output (MOS Relay contact N.O., Load max. 40VDC/300mA)
Live video output	CVBS 1.0Vp-p, 75 ohm, BNC connector

Network security

Max number of online users	10 users accounts available
Access	Multiple user access levels with password protection
Encryption	Base 64 HTTP encryption

Video streaming

Video compression	H.264 (main & high profile); M-JPEG
Streaming	RTP / HTTP, RTP / TCP, RTP / UPP, Multicast Multiple configurable streams in H.264 and M-JPEG, configurable frame rate and bandwidth
Bitrate	128Kbps to 12Mbps Frame rate and bitrate controllable on-the-fly VBR / CBR / GOP supported
IP filter	Yes
RTSP Authentication	On / Off

Video resolution (H x V)

Resolution	2MP(1920 × 1080), 1.3MP(1280 × 960), 1MP(1280 × 720), D1(720 × 480, 720 × 576), VGA(640 × 480), CIF(352 × 240)	
Multiple profile	Profile #1	Dual-stream mode, H.264 : up to 60 FPS @ 1920 x 1080, Motion JPEG : up to 30 FPS @ 720 x 480
	Profile #2	HDR mode, H.264 : up to 30 FPS @ 1920 x 1080, Motion JPEG : up to 30 FPS @ 720 x 480

Video functions

Day/Night (IR-cut filter)	Colour (Day), Monochrome (Night), Auto, Schedule
Scanning system	Progressive scan
Adjustable picture setting	Contrast, Brightness, Saturation
White balance	Auto / Tungsten / Indoor / Fluorescents1 / Fluorescents2 / Outdoor1 / Outdoor2
Shutter	1/25(30)s to 1/30000s
Back light compensation	On / Off
3D noise reduction	Off / 1 to 32 selectable
Privacy masking	Four independent areas
Sense Up	Off / 1 frame / 2 frames
Sense Up+	Yes
Auto gain control	54 dB variable gain
Other functions	Sharpness, Image flip, Image mirror, Defog, Hue
D/N quality setting	Yes

Integration

Mobile application	Integrated to LILIN mobile app (LILINViewer) iPhone, iPad, Android support
Video management	ONVIF Profile S LILIN NAV 1.0 Third party VMS through LILIN HTTP API
SD card recording	Support Micro SD/SDHC/SDXC card for circular recording (card is not included)
Web browser	Microsoft® Internet Explorer® 6.0 and later
Firmware	Firmware upgrade via HTTP
Detection features	Motion detection, Tamper detection, Zone Entering, Direction detection, Zone crossing
Alarm functions	Tampering / audio / motion /alarm detection Image upload over FTP and E-mail by tampering / audio / motion detection
Alarm event	FTP,SMTP, HTTP post, SD card, SAMBA
Alarm weighted mode	Yes

Network

Ethernet	10/100/1000Mbps Base-T, RT-45
Connectivity	ONVIF Profile S
Users	8 simultaneous users
ePTZ & digital zoom	Yes, ROI (Region of Interest) is supported
OSD	Text overlay for date, time and camera name
CPU, Memory	Embedded SoC, 1.2GHz Dual ARM Cortex-A9 & 600MHz ARM11, 1GB DDR3,256MB flash memory
Video display	LILIN Universal ActiveX & LILIN Java Applet
OS	Embedded Linux 3.8.0
Audio	Two-way Audio, G.711 u-law / PCM / AAC, External Microphone Required
Protocols	IPv4, IPv6, TCP, UDP, HTTP, SMTP, NTP, DDNS, UPnP, FTP, ARP, DHCP, PPPoE, DNS, RTSP, RTCP, Telnet, ICMP, IGMP, ONVIF Profile S, SNMP, SIP, Bonjour
Multi IP address	Yes
IVS Advanced 2.0	Motion Detection, Tampering Detection, Advanced Motion Detection, Traffic Light Detection, Tripwire Detection, Object Counting
IVS Advanced 2.1 (Optional)	Unattended Object Detection, Missing Object Detection, Crowd Detection, Loitering Detection, Face Detection