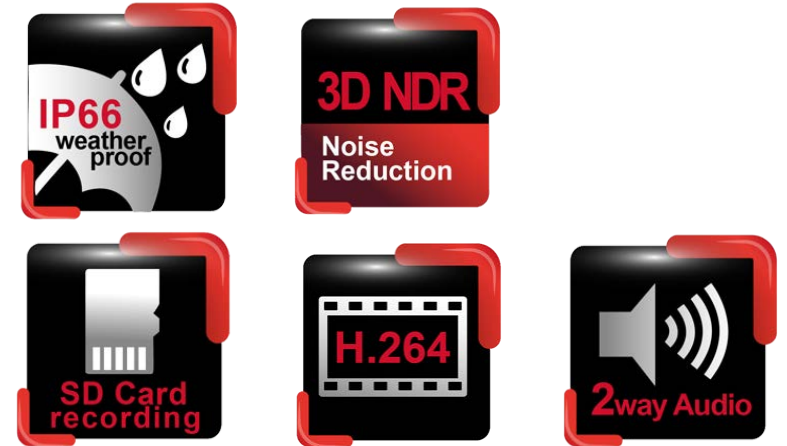


Z series | IP bullet camera

ZMR7722X

Day & Night 2MP HD AF Bullet IR IP Camera

www.meritlilin.com



- ▶ Full HD 2.0 megapixel CMOS image sensor
- ▶ 1080P True H.264 AVC High Profile video compression
- ▶ H.264 and Motion JPEG multi-profile video streaming
- ▶ Auto focus with zoom / focus motorized lens
- ▶ Rain repellent glass
- ▶ Smart H.264 supported
- ▶ 3D noise reduction (MCTF)
- ▶ 2D WDR function
- ▶ HDR function up to 100dB
- ▶ Digital PTZ supported
- ▶ IVS supported
- ▶ Tampering / Motion detection alarm function
- ▶ High efficiency IR LED, radiant distance up to 40m
- ▶ Day & Night (IR cut removable)
- ▶ ONVIF Profile S supported
- ▶ 2-way audio supported
- ▶ Digital I/O : 1 in, 1 out

Dimensions: (unit: mm)

Body: 98.5 x 90 x 195(W x H x D) Bracket: 160mm(L)

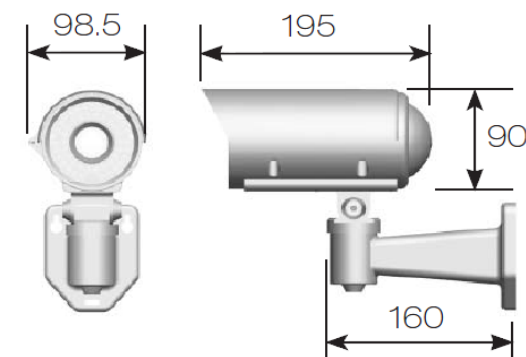
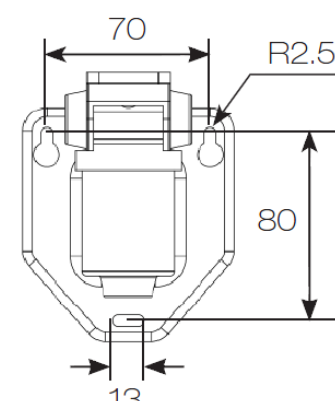


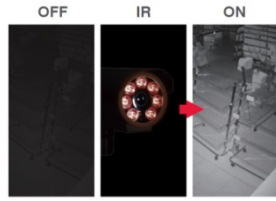
Diagram of mounting holes:



As with all Z series Auto Focus cameras, the Day & Night 2MP HD AF Bullet IR IP Camera ZMR7722X incorporates Sense up+, a unique technology that successfully delivers stunning video in low-light conditions. Utilizing intelligent image signal processing, AGC control, and 3D Noise Reduction, this model successfully delivers the ultimate low-light image without motion blur. Offering flexible Auto Focus installation feature, ZMR7722X fits into a range of environments such as retail, home, office, and hotel security. The ZMR7722X is capable of producing four independent video streams, different streams can be set for different applications, depending on the individual user requirements. The IP66-rated housing is designed to help the camera body withstand rain and dust and ensures operation under a multitude of harsh weather conditions.

Built-in IR Illumination

ZMR7722X IP camera with infrared (IR) illumination where IR LEDs are built-in. Built-in with IR LED, the camera provides night vision up to 40 metres



Video Security App

Available on Android and iOS – **LILINViewer** app provides security alarm push notification, real-time live viewing, and remote video playback



SD Cards in Sync with NAV Software

ZMR7722X camera with built-in Micro SD/SDHC card slots can provide redundant video viewing and recording. You can synchronize an SD card with LILIN VMS (Video Management Software) – Navigator (NAV)

Wind and Rain Standards

Meet international IP66 standards for dust and moisture resistant allowing you to install cameras in environments subject to wind and rain



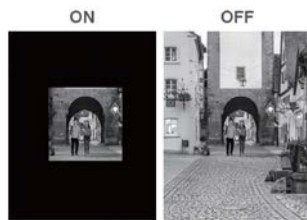
3D Noise Reduction

Remove noise from a signal. Suppressing noise in an image in low light conditions and able to retain quality videos at the same time



Region of Interest (ROI)

A Region of Interest (ROI) is a specified part of an image that is highlighted from a camera. This feature is great for highlighting areas such as doors or areas of access where an overall scene is still required



ONVIF-compliant

Open Network Video Interface Forum (ONVIF) is a standard for physical IP based security products. ZMR7722X camera is ONVIF Profile S conformant



Alarm Detection

Alarm Detection is designed to provide the electronic detection of intruders



Motion Detection

Detect motion and capture the event. Motion in the selected area will provoke an alert.



Auto Focus feature

Use the camera software to trigger the auto focus function at any time during installation or after. Auto Focus feature to automatically focus the camera from a distant location, which eases the process on installation and helps you effectively position the camera at the right focus angle in a matter of seconds



Day and Night Operations via Removal of the IR-cut filter

ZMR7722X camera was designed using a mechanical IR cut filter for increased IR sensitivity resulting in improved night time images. The removable IR-cut filter allows day and night operations even in the low lux condition providing outstanding vision



Sense Up+

Deliver outstanding video outputs in poor light conditions without experiencing motion blur. You can see video clearly even during nighttime without sufficient lighting support



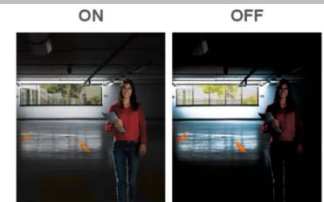
Two-way Audio Support

With 2-way audio communication, you can project your voice through the camera's speaker instead of hearing what's going on (1-way audio)



Wide Dynamic Range (WDR)

Wide Dynamic Range (WDR) displays details of both the brightest and darkest areas. WDR can extend image visibility under high contrast lighting scenes and improve image quality



Privacy Masking

Privacy Masking is a feature used to protect personal privacy by concealing private areas in the camera's field of view. Doorways and house windows for example are not subject to surveillance



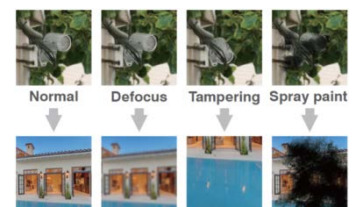
Audio Detection

With Audio Detection technology, an alarm is triggered based on ambient sound conditions as the threshold



Tamper Detection

Automatically detects camera sabotage or failure. Detects any attempts to tamper with the camera – partially or completely blocking its lens or field of view



Day & Night 2MP HD AF Bullet IR IP Camera

Video performance	
Model#	ZMR7722X
Low Light Mode (Colour)	Color : 0.035 Lux at F1.6 B/W : 0.007 Lux at F1.6
With Infrared	0 Lux with IR LED ON
2D WDR	Off / Auto / x2 / x3 / x4 (by normal mode)

Power	
Power consumption	DC12V, 8.2W
PoE+	PoE, 10.1W
Power supply	DC12V ±10% PoE (IEEE 802.3af compliant)

Sensor	
Sensor type	1/2.8" CMOS image sensor
Total sensor pixels	1945 (H) x 1097 (V) = 2,133,665 (pixels)

Certifications	
IP Rating	IP66 waterproof
CE	Yes
FCC	Yes, EMI Class B

Lens		
Focal length	2.8 – 8 mm (zoom / focus motorized)	
Iris	F1.6	
Angle of View	H	94.7° (W) – 57.1° (T)
	V	57.2° (W) – 31.9° (T)
	D	123.9° (W) – 65.7° (T)

Night vision (infrared LED)	
Distance	40M
Peak wavelength	850nm
Beam spread	60° , 90°

Environmental	
Operating temperature	-40°C to 50°C (-40°F to 122°F)

PC requirement	
CPU	Intel i3 or above
OS	Windows 7, Windows 8, Windows 10
RAM	4GB or above, Dedicated Graphics Card

Mechanical	
Dimensions (W x H x D)	Body : 98.5mm(W) x 90mm(H) x 195mm(D) , Bracket : 160mm(L)
Weight	1450g approx.

Input / output	
Live video output	CVBS 1.0Vp-p, 75 ohm, connector
Audio input / output	Mono, 1.98 Vp-p , 2.2KΩ , Terminal Block
Alarm input / output	Digital 1 input (TTL, +3 – 5VDC) / 1 Output (MOS Relay contact N.O., Load max. 40VDC/300mA), Terminal Block

Network security	
User accounts	10 user accounts available
Access	Multiple user access levels with password protection
Encryption	Base64 HTTP encryption/ Digest HTTP authentication

Video streaming	
Video compression	H.264 Main and High Profile , Motion JPEG
Streaming	RTP/HTTP, RTP/TCP, RTP/UDP, Multicast
Bitrate	128Kbps – 12Mbps Frame rate and bit rate controllable on-the-fly VBR / CBR / GOP supported, Fixed bitrate, Smart H.264

Video resolution (H x V)	
1080p HD	1920 x 1080
1280x960	1280x960,
720p HD	1280 x 720
D1	720 x 480 , 720 x 576
640x480	640x480
CIF	352 x 240
Maximum Frame Rate	H.264 / Motion JPEG : up to 30 fps @ 1920x1080

Video functions	
Day/Night (IR-cut filter)	Auto / Schedule / Day (Color) / Night (Mono)
Scanning system	Progressive Scan
Auto Focus	One push
White balance	Auto / Tungsten / Indoor / Fluorescents1 / Fluorescents2 / Outdoor1 / Custom
Shutter	1/30(1/25)s – 1/30000s
3D noise reduction	Off / 1 – 32 Selectable
S/N Ratio	More than 50dB (AGC off)
High Dynamic Range	Up to 100dB (by HDR mode, 2 shutter line interleave)
Privacy masking	Off / On (4 zones)
Sense Up	Off / 1 Frame / 2 Frames
Auto gain control	66 dB Variable Gain
Other functions	Brightness, Contrast, Hue, Saturation, Sharpness, Mirror, Flip, Lens Distortion Correction

Integration	
Mobile application	Integrated to LILIN mobile app (LILIN Viewer), iPhone, iPad, Android support
Video management	ONVIF Profile S LILIN Navigator Enterprise 1.0 and 2.0 Third party VMS through LILIN HTTP API
SD card recording	Support Micro SD/SDHC/SDXC card for circular recording (card is not included)
Web browser	Microsoft® Internet Explorer® 9.0 and later
Firmware	Firmware update via HTTP and IP Scan , Firmware available at web site
IVS(Intelligent Video Surveillance)	Advanced motion detection, Tripwire detection, Semaphore + Tripwire detection, Object counting
Alarm event triggers	Motion / Tamper / Audio / Alarm / Network lost detection
Alarm event actions	FTP, HTTP post, SD card, SAMBA

Network	
Ethernet	10Base-T / 100Base-TX, RJ-45
Users	10 simultaneous users
ePTZ & digital zoom	Yes, ROI is supported
OSD	Text overlay for date, time, and camera name
CPU, Memory	Embedded SoC ARM Cortex-A9, 600MHz, 256MB DDR3, 256MB flash memory
Video display	LILIN Universal ActiveX , LILIN Java Applet & HTML5
OS	Embedded Linux 3.10
2-way audio	G.711 / PCM / AAC
Protocols	IPv4, IPv6, TCP, UDP, HTTP, HTTPS, SMTP, SIP, MQTT, QoS, SNMP, SNMP Trap, NTP, DDNS, UPnP, FTP, ARP, DHCP, PPPoE, DNS, RTSP, RTCP, Telnet, ICMP, IGMP, ONVIF Profile S, SDDP, Bonjour
Languages	English, Traditional Chinese, Simplified Chinese, Spanish, Italian, Turkish, Russian, Korean, French, Arabic, Hungarian, Japanese