



IPD2220ES/LD2222E

1080P HD Dome IP Camera

IPD2220-IVS

1080P HD IVS Dome IP Camera

SD2222E

1080P60 HD Dome IP Camera

IPD6220ES (M12 MODEL)

1080P HD IVS Dome IP Camera

IPD6222ES (RJ-45 MODEL)

1080P HD IVS Dome IP Camera

Quick Installation Guide

IMEGAPRO

CAUTION

- Do not drop or strike this equipment
- Do not install the equipment near any naked flames or heat sources
- Do not expose this unit to rain, moisture, smoke or dust environment
- Do not cover the opening of the cabinet with cloth and plastic or to install this unit in poor ventilated places. Allow 10cm between this unit and its surroundings
- Do not continue to operate the unit under abnormal conditions such as detection of smoke, strange smell or no display on screen while power is turned on
- Do not touch the power connection with wet hands
- Do not damage the power cord or leave it under pressure
- Do not operate this unit near magnet, speaker system, etc., to avoid unnecessary magnetic interference
- Connection cables should be grounded properly

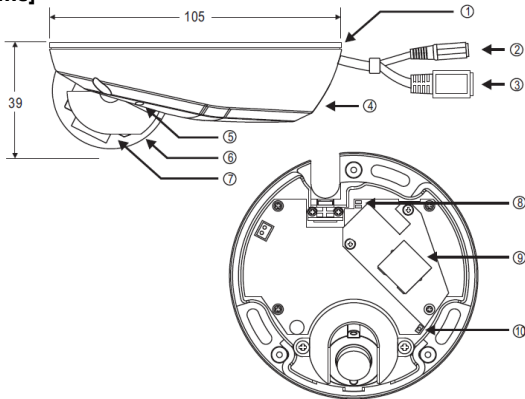
The ITE is to be connected only to PoE networks without routing to the outside plant.

L'ITE ne doit être connecté que sur un réseau PoE sans routage vers l'alimentation extérieure.

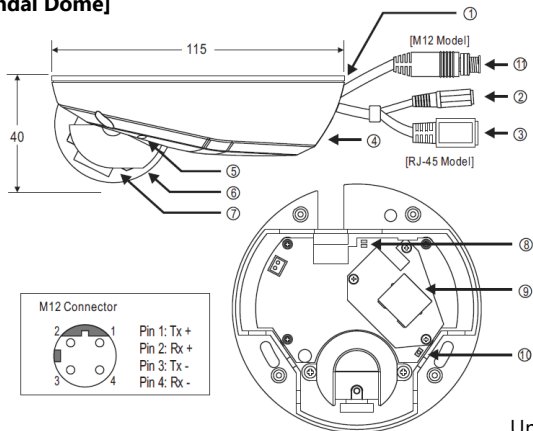


Product Overview

[Dome]



[Vandal Dome]



Unit: mm

- ① Bottom Chassis
- ② DC Power Input Jack (DC12V \pm 10%)
- ③ RJ-45 Network Connector (Support PoE)
- ④ Dome Cover
- ⑤ Microphone
- ⑥ Mask Cover
- ⑦ Camera Body
- ⑧ Network Indicator LEDs

Green (LINK): Network connection. LED remains lit while connection is in place.

Orange (ACT): Data communications. This LED should continue to blink.

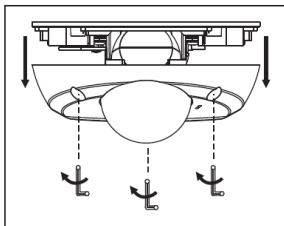
- ⑨ Micro SD Card Slot
- ⑩ Reset Key

Restores server back to factory default setting.

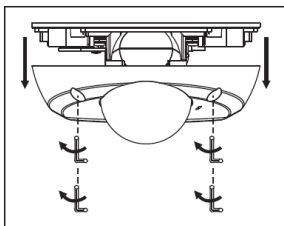
- ⑪ Network Connector (M12 model, support PoE)
M12, 4-Pin D-coded male connector

Installation

1. Please use the enclosed hexagon screw driver to loose and remove the screws on the dome cover.

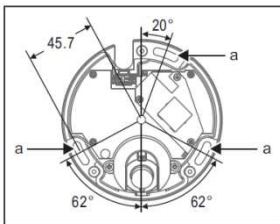
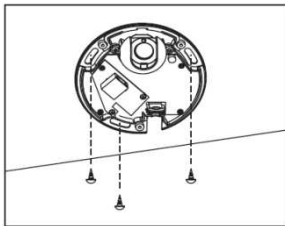


[Dome]

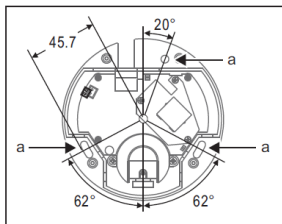


[Vandal Dome]

2. Put the provided screws (M4.0x25, wooden screw) through the holes marked as "a", and fix the bottom chassis in the desired area.

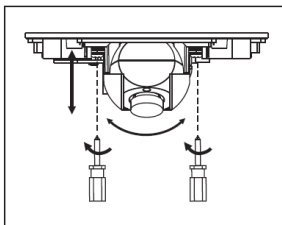


[Dome]

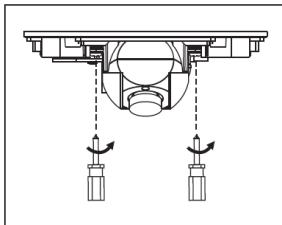


[Vandal Dome]

3. Loosen the screws on the translucent cover to rotate the camera body to the desired angle and then tighten the screws.

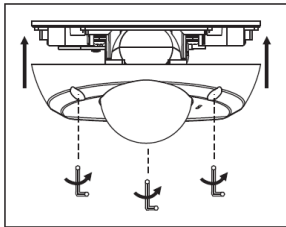


[Dome]

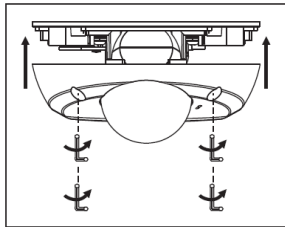


[Vandal Dome]

4. Attach the dome cover to the bottom chassis. Use hexagon screw driver to tighten the screws.



[Dome]

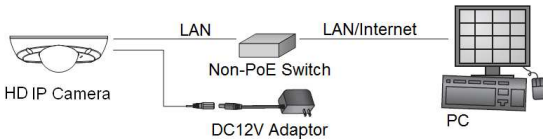


[Vandal Dome]

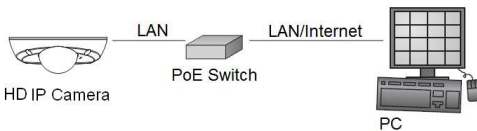
System Architectures

To connect the Covert IP Camera to the network, please deploy one of the following system architectures:

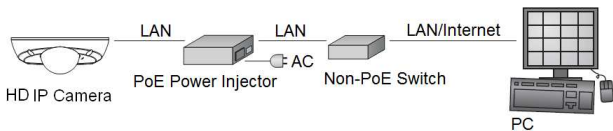
- (1). Use a DC12V power adaptor and a network switch to connect to the network.



- (2). Use a PoE network switch to connect to the network.



- (3). Use a PoE power injector and a network switch to connect to the network.



Emergency Factory Default

To restore the hardware to factory default settings, please follow these steps:

1. Press and hold "RESET Key" for 10 seconds and release.
2. Wait for about 40 seconds, and the network LED light should turn off, and go back on again.
3. The camera is now restored to factory default settings, and will reboot automatically.
4. Search for the IP device using the IPScan software.
5. Start the IP device via an Internet browser.
6. Enter the default username "admin" and password "pass" to operate.

NOTE: For your convenience, the IP address will revert to the default setting of 192.168.0.200.

Before Accessing IP Cameras

Before accessing the IP camera, make sure that the camera's RJ-45 network, audio, and power cables are properly connected. To set the IP address, consult your network administrator for an available IP address. The default IP address for each IP camera is 192.168.0.200. Users can use the default IP address for verifying the camera's network connection.

Software Requirements

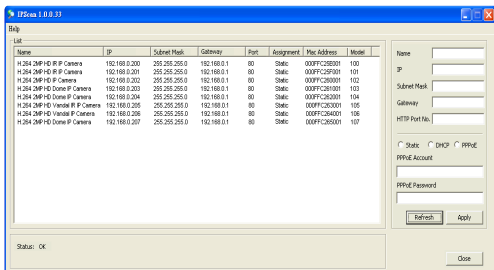
Merit LILIN Universal ActiveX software components are required for web interface display of JPEG or H.264 Full HD video. When you login to the IP camera by Internet Explorer, the security warning dialog box will prompt the installation of the LILIN Universal ActiveX. Click **Install** to download it.



Configuring IP Addresses with IPScan Software

To configure an IP address using the IP scan tool, you can copy the IPScan software from the installation CD, and paste to your computer. Alternatively, you can execute the IPScan software from the installation CD, or download the software from the Merit LILIN website (www.meritlilin.com). To change the settings of the IP address, subnet mask, gateway, or HTTP port, you can follow the steps below:

1. Run the IPScan software.
2. Click **Refresh**. All available devices should be listed in the device list.
3. Select your device from the list provided.
4. Change the IP address, subnet mask, gateway, or HTTP port for the IP camera.
5. Click **Apply** to submit the settings.
6. Click **Refresh** to verify the settings.



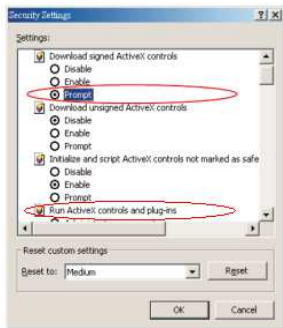
Configuring IP Addresses via Web Interface

To change an IP address via web interface, type the default IP address (192.168.0.200) in the Internet browser and follow the steps below:

1. Login to the H.264 Full HD IP camera by the default username "admin" and default password "pass"
2. Click **Basic Mode** configuration hyperlink.
3. Click **Network->General** hyperlink.
4. Change the IP address, subnet mask, gateway, or HTTP port for the IP camera.
5. Click **Submit** to verify the settings.

Internet Browser Settings & Application Required

Make sure your Internet browser allows the signed ActiveX plug-in to work on your computer. Set "Download Signed ActiveX plug-in controls" to "Prompt" and "Run ActiveX control and plug-in" to "Enable". You can set this option via Internet Explorer-> Tools-> Options-> Security Settings.



Once complete, you can access the IP camera's live video by entering the default IP address via your Internet browser. As the security warning dialog box appears, click **OK** to download the ActiveX directly from the IP camera.

Login

There are two levels of user authentication, including admin and guest, that can access the IP camera. Administrator is authorized to reset basic mode settings and see live video, while the guest is allowed to see only live video.



The default usernames and passwords are as follows:

	Administrator
Username	admin
Password	pass

To logon the H.264 FULL HD IP camera, please type username and password in logon HTML page and click on Submit button to enter the system.

Creativity, Progress, and Excellence



MERIT LILIN ENT. CO., LTD

www.meritlilin.com

66-LD2222CSM